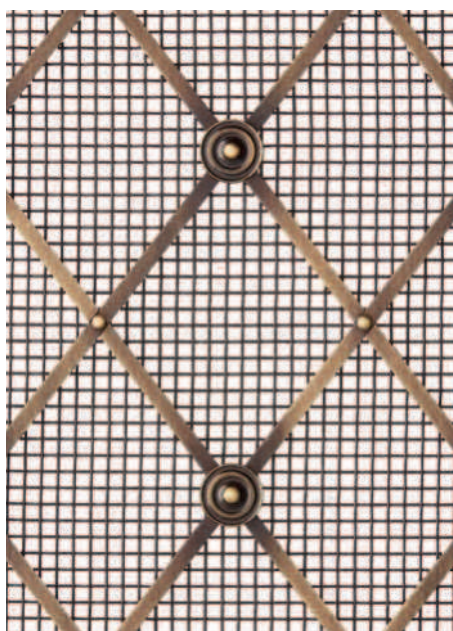
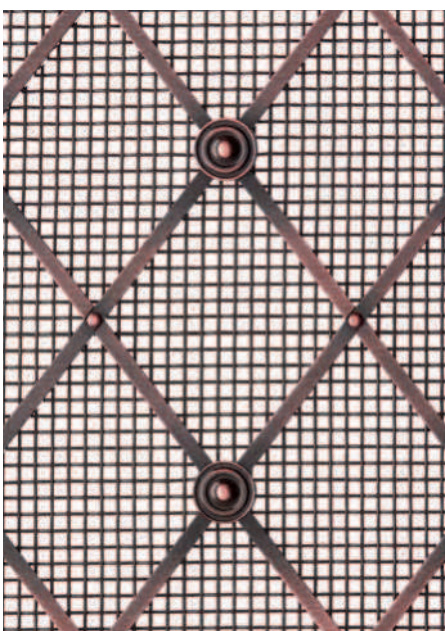


Grille *finishes*

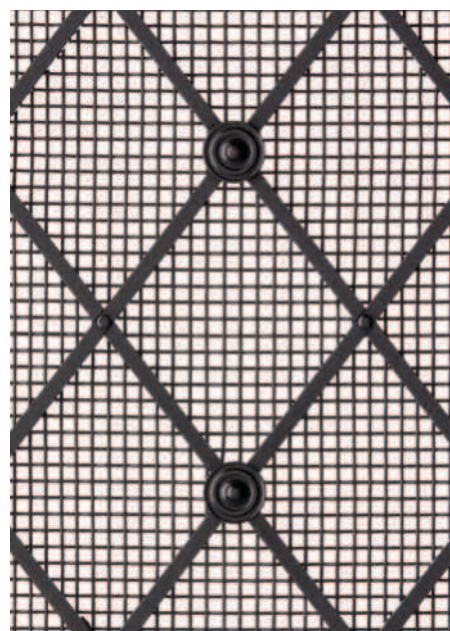
To complement your design scheme, choose from a hand-picked selection of our most-coveted brass finishes and transform the appearance of your decorative grilles.



ABL - Antique brass lacquered



ACL - Antique copper lacquered

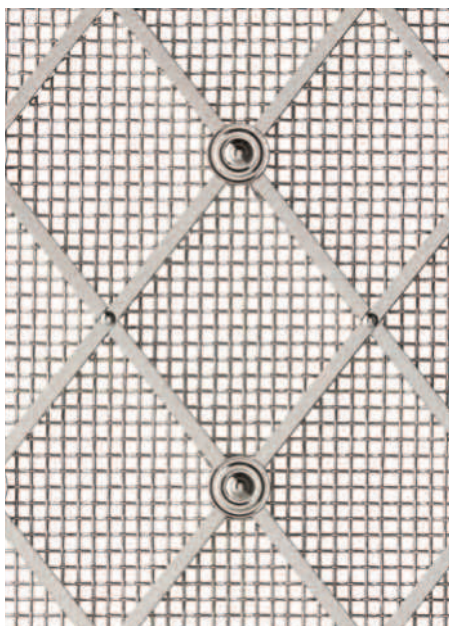


BMA - Bronze metal antique

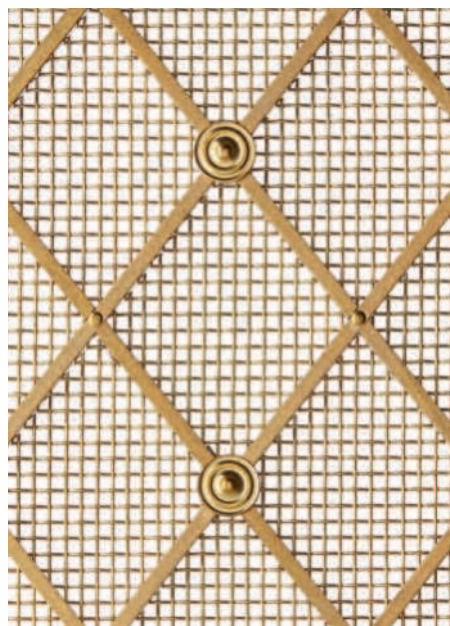
In-situ grille photographed in our antique brass lacquered (ABL) finish.



PCP - Polished chrome plate



PNP - Polished nickel plate



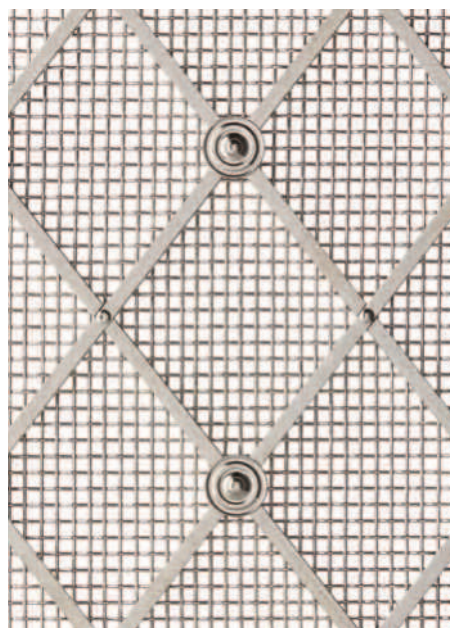
SBL - Satin brass lacquered



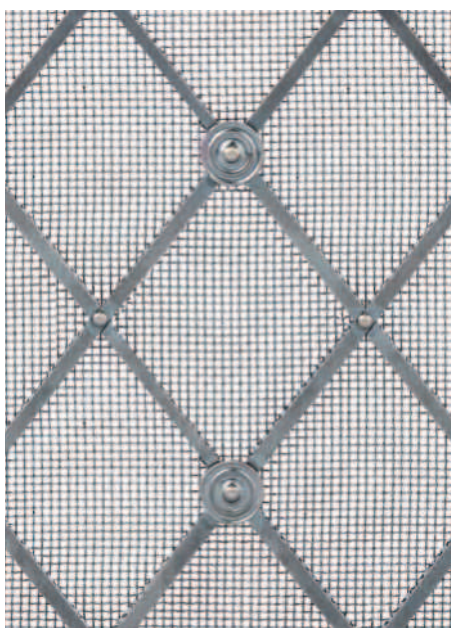
SBUL - Satin brass unlacquered



SCP - Satin chrome plate



SNP - Satin nickel plate



ASL - Antique silver lacquered



Hand-finished by

our team of expert craftsmen in the heart of Birmingham.

Regency Diamond *grilles*

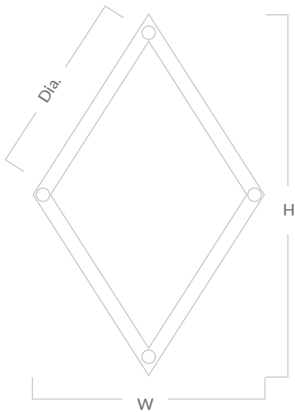
Handcrafted in solid brass, our Regency Diamond grilles add an elegant touch to interiors. Featuring a perfectly symmetrical pattern assembled by hand and trimmed to fit your required aperture, your grille will come ready to fit.



Diamond options

Available in three different diamond sizes, each made from a 3.2mm square section brass bar and fitted to hold with decorative pins.

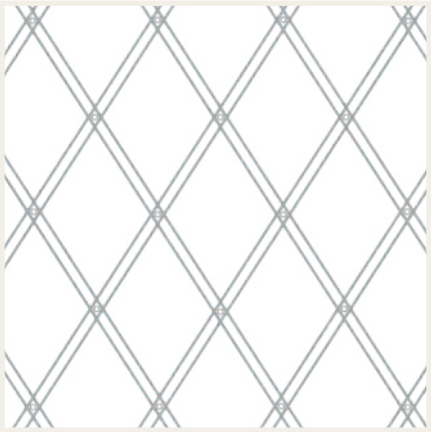
Width (W)	Height (H)	Internal diagonal dia (Dia.)
33mm (1¼")	44mm (1½")	25mm (1")
51mm (2")	64mm (2½")	38mm (1½")
70mm (2¾")	89mm (3½")	54mm (2½")



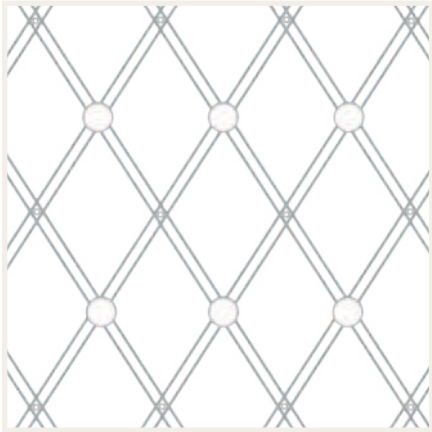
In-situ grille photographed in our antique brass lacquered (ABL) finish.

Rosette options

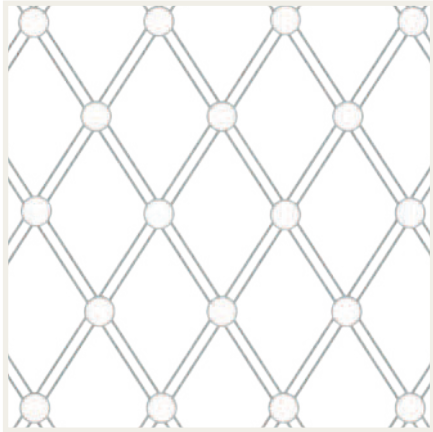
Available with the option of plain or floral rosettes on every or alternating crossovers. They can also be supplied without rosettes, showing the pinheads only. An additional option of a mixed finish is available on request for some grilles.



No rosette



Alternating rosettes



All rosettes

Mesh options

Available with a number of mesh options, for more information, please see [page 121](#).

Grille frame

Available with a metal frame, for more information please see [page 120](#).

Mixed finish

- Grilles without rosettes can only be satin brass and satin brass lacquered but with a backing mesh in any other finish
- Grilles with alternate rosettes can be mixed with two finishes (excluding BMA). The grille is one finish and the mesh and rosettes a different finish
- Grilles with rosettes on all joins cannot be offered in a mixed finish

Cut pins

(The pins used to assemble the grilles are clipped at the back and hammered over to create a cleaner look)

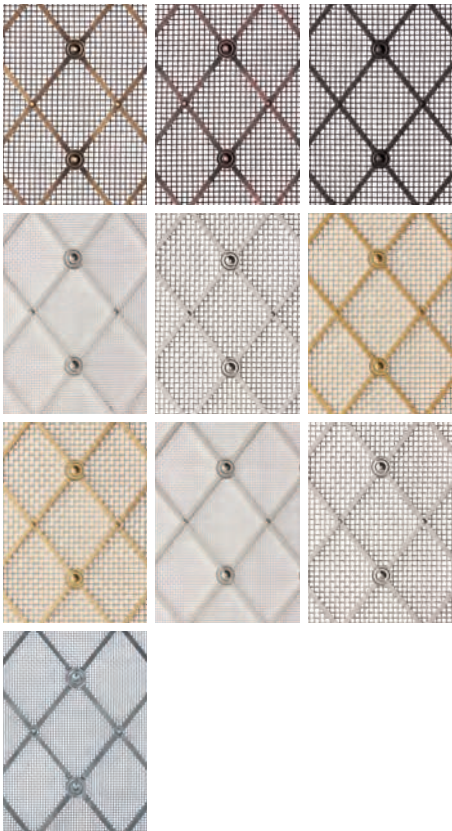
- They are only offered when grilles have no mesh backing
- They cannot be offered on grilles with polished nickel, polished chrome or bronze metal antique

Grille tolerance

All grilles are made to a 3.175mm (1/8”) tolerance.

Finish options

To see our 10 grille finishes in full, please turn to [page 100](#).

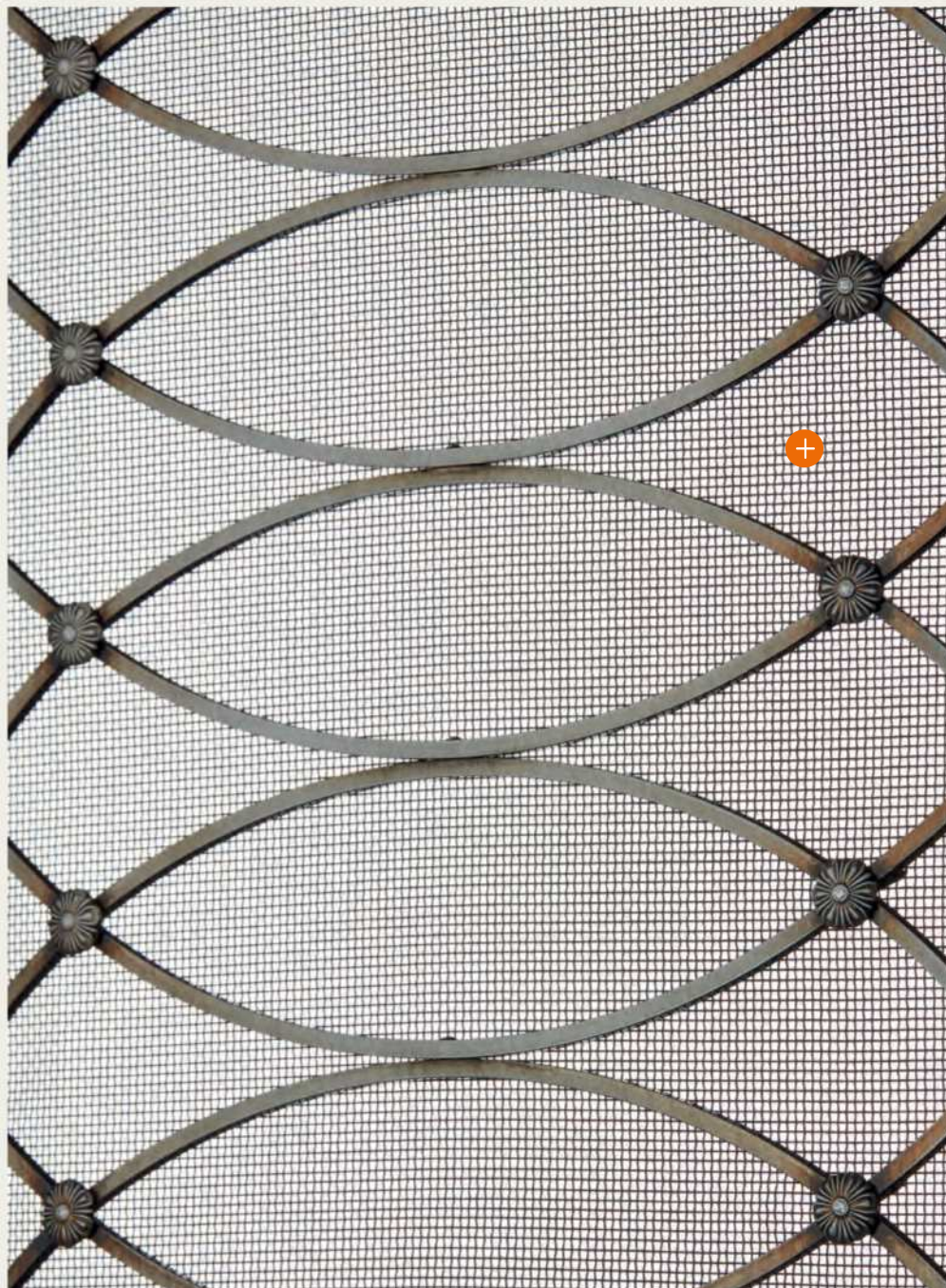


Ordering your grille

Please turn to [page 122](#) for details on how to order your grille.

Elliptical *grilles*

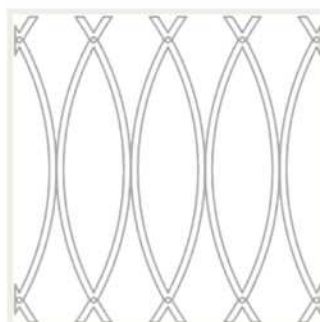
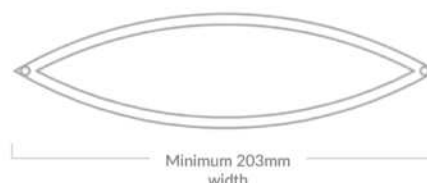
Our Elliptical Pattern grilles add a truly sophisticated look to cabinet doors, radiator covers and more. Handcrafted from solid brass and made to fit into your required aperture, they come ready to install.



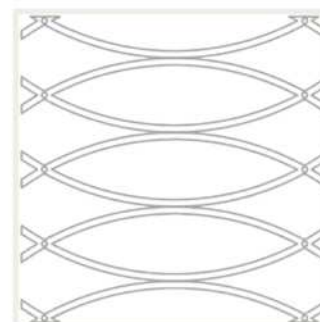
Orientation options

The ellipses will stretch to match either the height or width of your required measurements as indicated by the orientation on the right.

Please note, the longer measurement of your required panel needs to run in alignment with the stacked ellipses to achieve the desired look. For example, the height of the vertical grilles should be longer than the width.



Horizontal

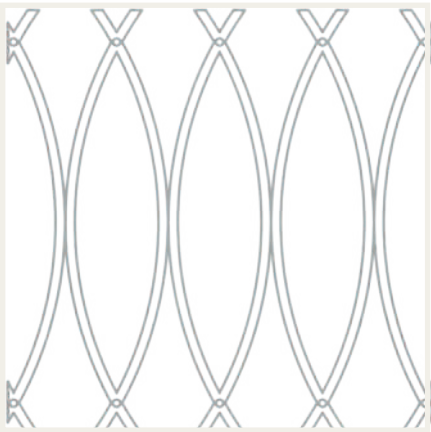


Vertical

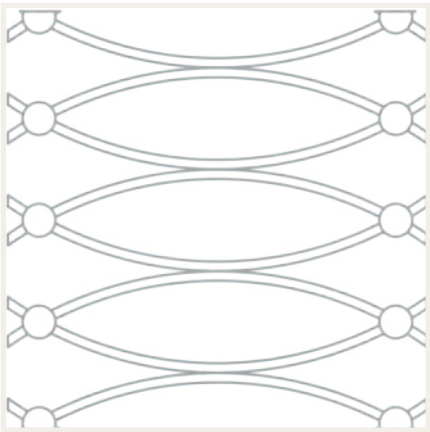
In-situ grille photographed in our antique brass lacquered (ABL) finish.

Rosette options

Available with the option of plain or floral rosettes on every or alternating crossovers. They can also be supplied without rosettes, showing the pinheads only. An additional option of a mixed finish is available on request for some grilles.



No rosette



All rosettes

Mesh options

Available with a number of mesh options, for more information, please see page 121.

Grille frame

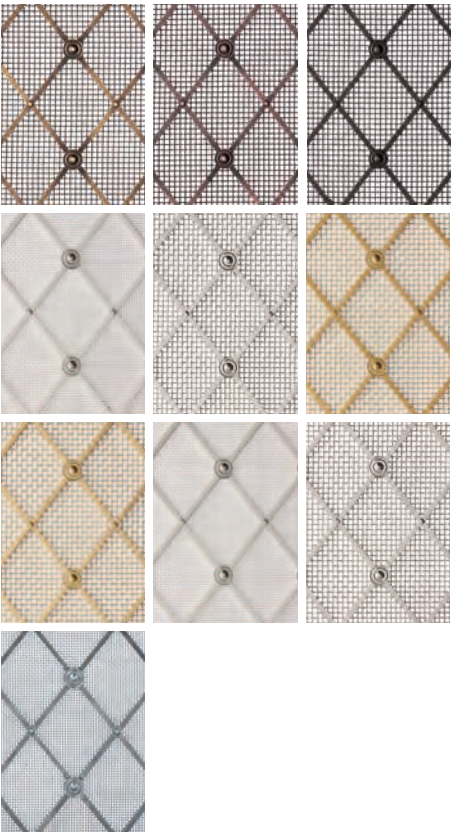
Available with a metal frame, for more information please see page 120.

Grille tolerance

All grilles are made to a 3.175mm (1/8") tolerance.

Finish options

To see our 10 grille finishes in full, please turn to page 100.



Ordering your grille

Please turn to page 122 for details on how to order your grille.

Georgian Square *grilles*

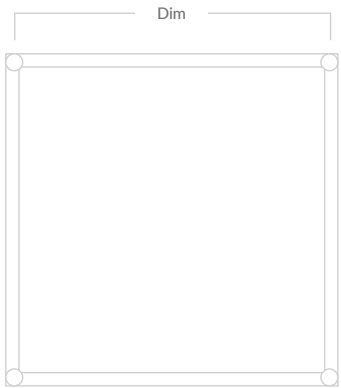
Our Georgian Square grilles add a touch of finesse to panels, doors, vents and more. Hand crafted from solid brass and made to fit into your required aperture, they come ready to install.



Square options

Available in three different square sizes, each made from a 3.2mm square section brass bar and fitted to hold with decorative pins.

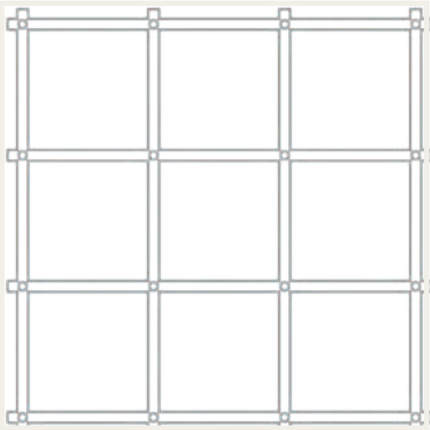
Dimensions (Dim)
25mm (1")
38mm (1½")
54mm (2 ⅛")



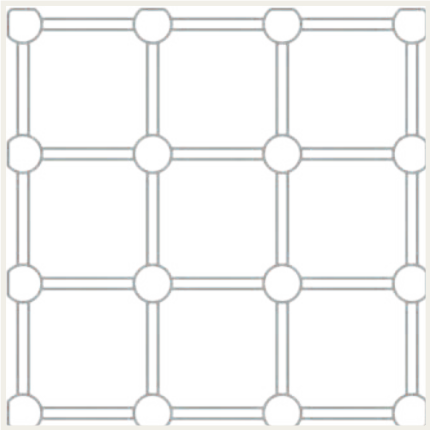
In-situ grille photographed in our antique brass lacquered (ABL) finish.

Rosette options

Available with the option of plain or floral rosettes on every crossover. They can also be supplied without rosettes, showing the pinheads only. An additional option of a mixed finish is available on request for some grilles.



No rosette



All rosettes

Mesh options

Available with a number of mesh options, for more information, please see [page 121](#).

Grille frame

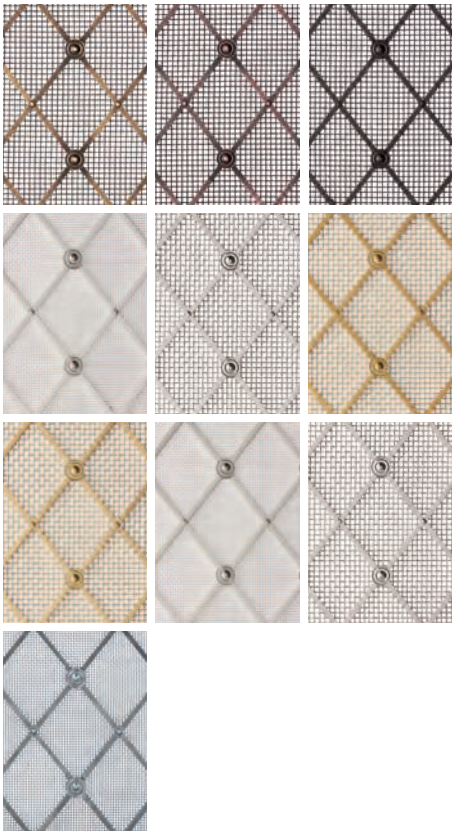
Available with a metal frame, for more information please see [page 120](#).

Grille tolerance

All grilles are made to a 3.175mm (1/8”) tolerance.

Finish options

To see our 10 grille finishes in full, please turn to [page 100](#).



Ordering your grille

Please turn to [page 122](#) for details on how to order your grille.

Diamond Interwoven *grilles*

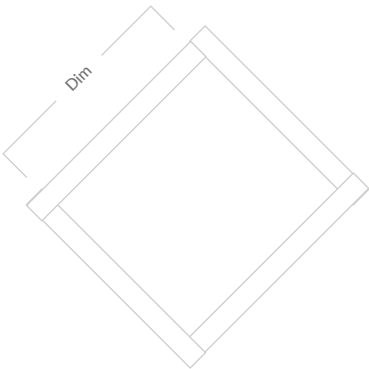
A basket weave style, our hand-woven Diamond Interwoven grille is available in a number of different apertures and section size configurations and is supplied in a diamond layout with either plain or reeded style sections.



Diamond options

Available in four different diamond sizes.

Dimensions (Dim)
10mm (3⁄8")
13mm (1⁄2")
19mm (3⁄4")
25mm (1")



In-situ grille photographed in our antique brass lacquered (ABL) finish.

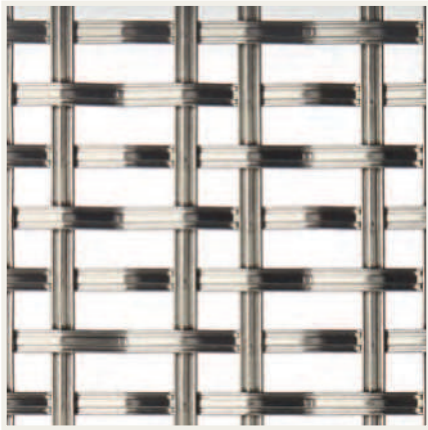
Plain or reeded wire

Interwoven grilles are available in both plain and reeded wires with an option of 3mm and 5mm wire width.

3mm wire is not available with 25mm diamond sizes.



Plain wire



Reeded wire

Mesh options

Available with a number of mesh options, for more information, please see [page 121](#).

Grille frame

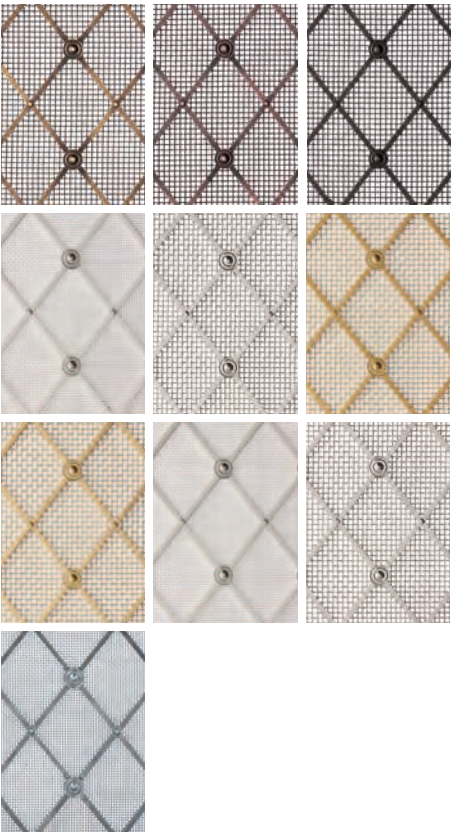
Available with a metal frame, for more information, please see [page 120](#).

Grille tolerance

All grilles are made to a 3.175mm (1/8”) tolerance.

Finish options

To see our 10 grille finishes in full, please turn to [page 100](#).



Ordering your grille

Please turn to [page 122](#) for details on how to order your grille.

Square Interwoven *grilles*

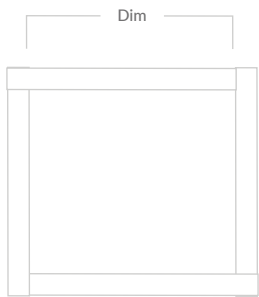
A basket weave style, our hand-woven Square Interwoven grille is available in a number of different apertures and section size configurations and is supplied in a square layout with either plain or reeded style sections.



Square options

Available in four different square sizes.

Dimensions (Dim)
10mm (3⁄8")
13mm (1⁄2")
19mm (3⁄4")
25mm (1")



In-situ grille photographed in our polished nickel plate (PNP) finish.

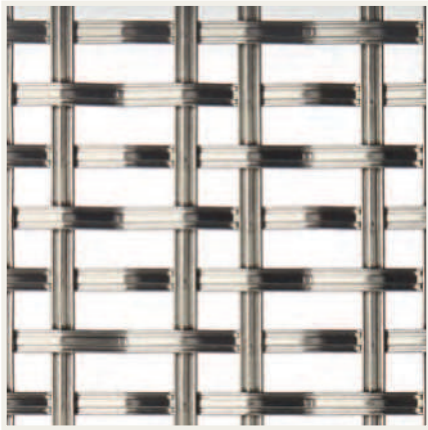
Plain or reeded wire

Interwoven grilles are available in both plain and reeded wires with an option of 3mm and 5mm wire width.

3mm wire is not available with 25mm diamond sizes.



Plain wire



Reeded wire

Mesh options

Available with a number of mesh options, for more information, please see [page 121](#).

Grille frame

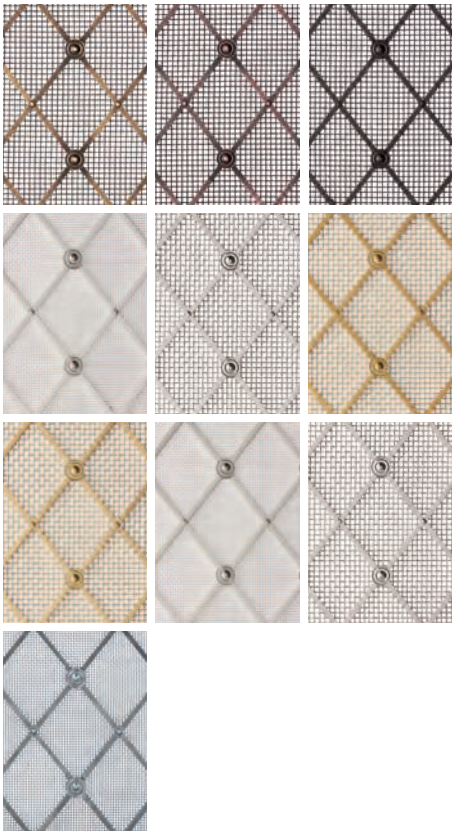
Available with a metal frame, for more information, please see [page 120](#).

Grille tolerance

All grilles are made to a 3.175mm ($\frac{1}{8}$ ") tolerance.

Finish options

To see our 10 grille finishes in full, please turn to [page 100](#).

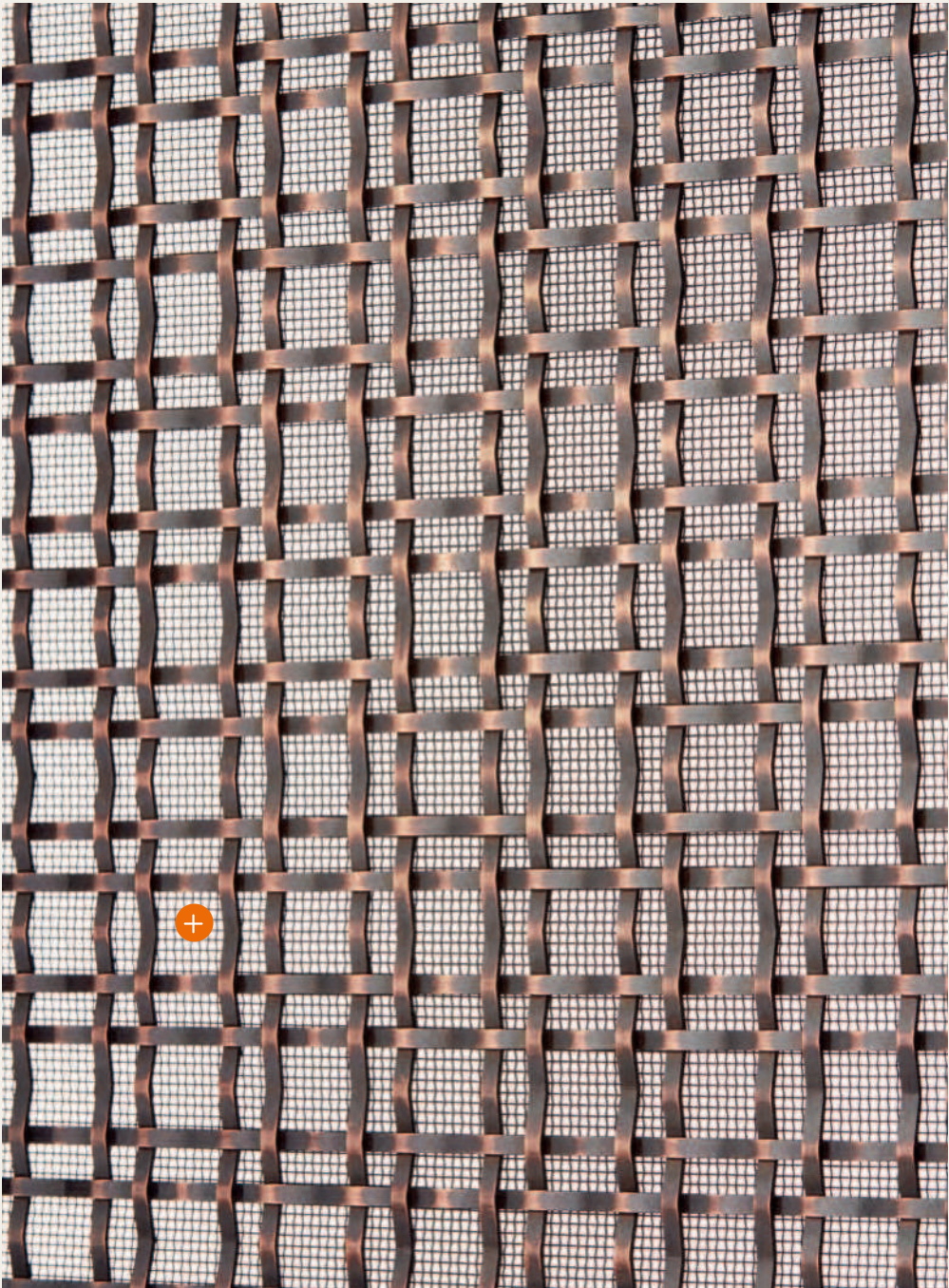


Ordering your grille

Please turn to [page 122](#) for details on how to order your grille.

Double Square Interwoven *grilles*

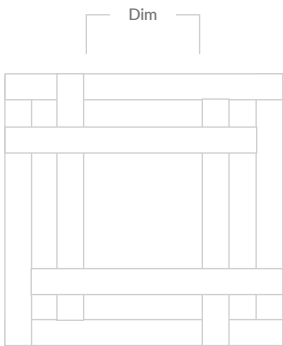
A basket weave style, our hand-woven Double Square Interwoven grille is available in a number of different apertures and section size configurations and is supplied in a square layout with either plain or reeded style sections.



Square options

Available in three different square sizes.

Dimensions (Dim)
13mm (½")
19mm (¾")
25mm (1")



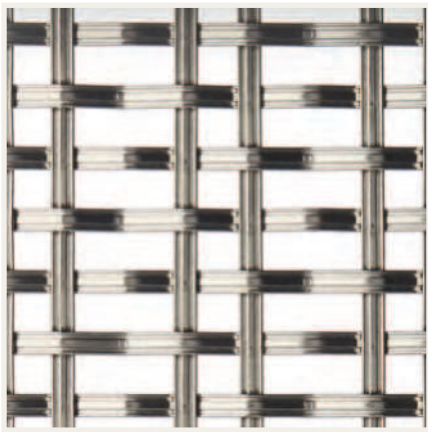
In-situ grille photographed in our antique brass lacquered (ABL) finish.

Plain or reeded wire

Double interwoven grilles are available in both plain and reeded wires with a 3mm wire width.



Plain wire



Reeded wire

Mesh options

Available with a number of mesh options, for more information, please see [page 121](#).

Grille frame

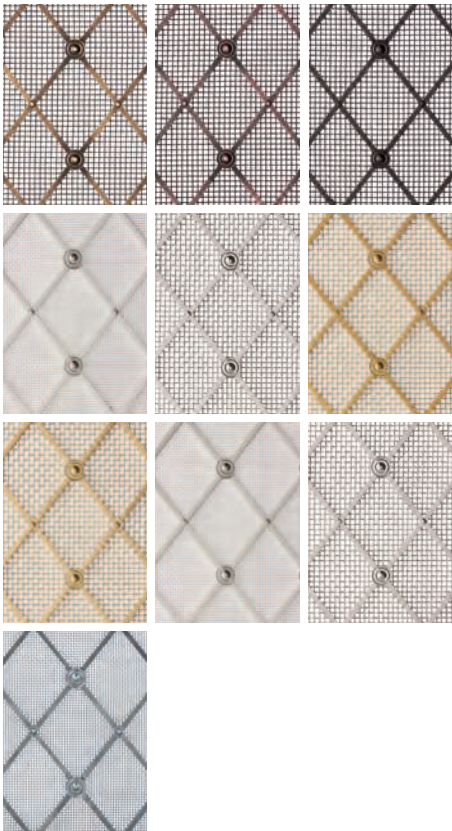
Available with a metal frame, for more information, please see [page 120](#).

Grille tolerance

All grilles are made to a 3.175mm ($\frac{1}{8}$ ") tolerance.

Finish options

To see our 10 grille finishes in full, please turn to [page 100](#).



Ordering your grille

Please turn to [page 122](#) for details on how to order your grille.

Double Diamond Interwoven *grilles*

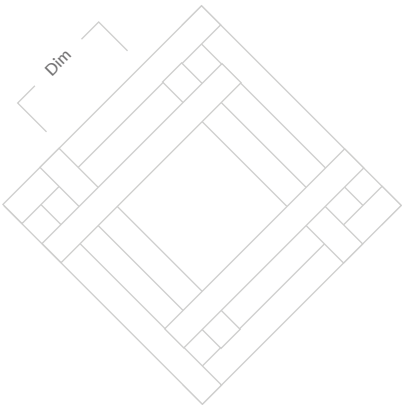
A basket weave style, our hand-woven Double Diamond Interwoven grille is available in a number of different apertures and section size configurations and is supplied in a diamond layout with either plain or reeded style sections.



Diamond options

Available in three different diamond sizes.

Dimensions (Dim)
13mm (½")
19mm (¾")
25mm (1")



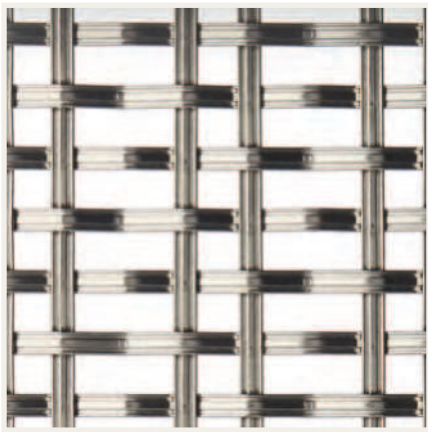
In-situ grille photographed in our satin brass unlacquered (SBUL) finish.

Plain or reeded wire

Double Interwoven grilles are available in both plain and reeded wires with a 3mm wire width.



Plain wire



Reeded wire

Mesh options

Available with a number of mesh options, for more information, please see **page 121**.

Grille frame

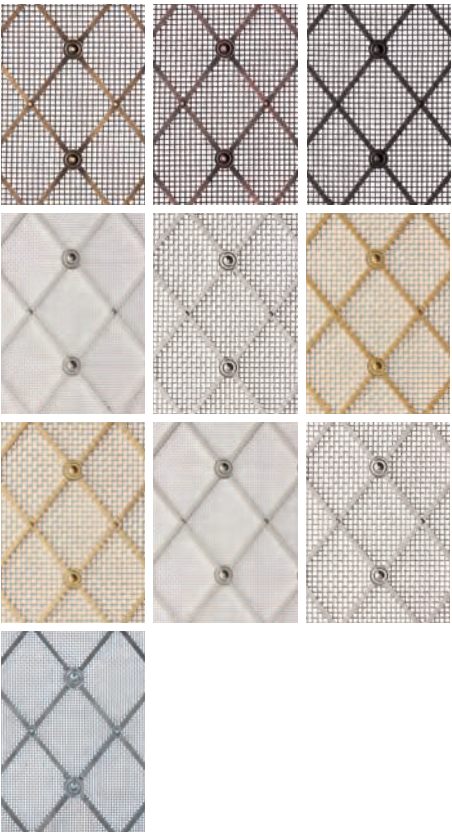
Available with a metal frame, for more information, please see **page 120**.

Grille tolerance

All grilles are made to a 3.175mm (1/8”) tolerance.

Finish options

To see our 10 grille finishes in full, please turn to **page 100**.

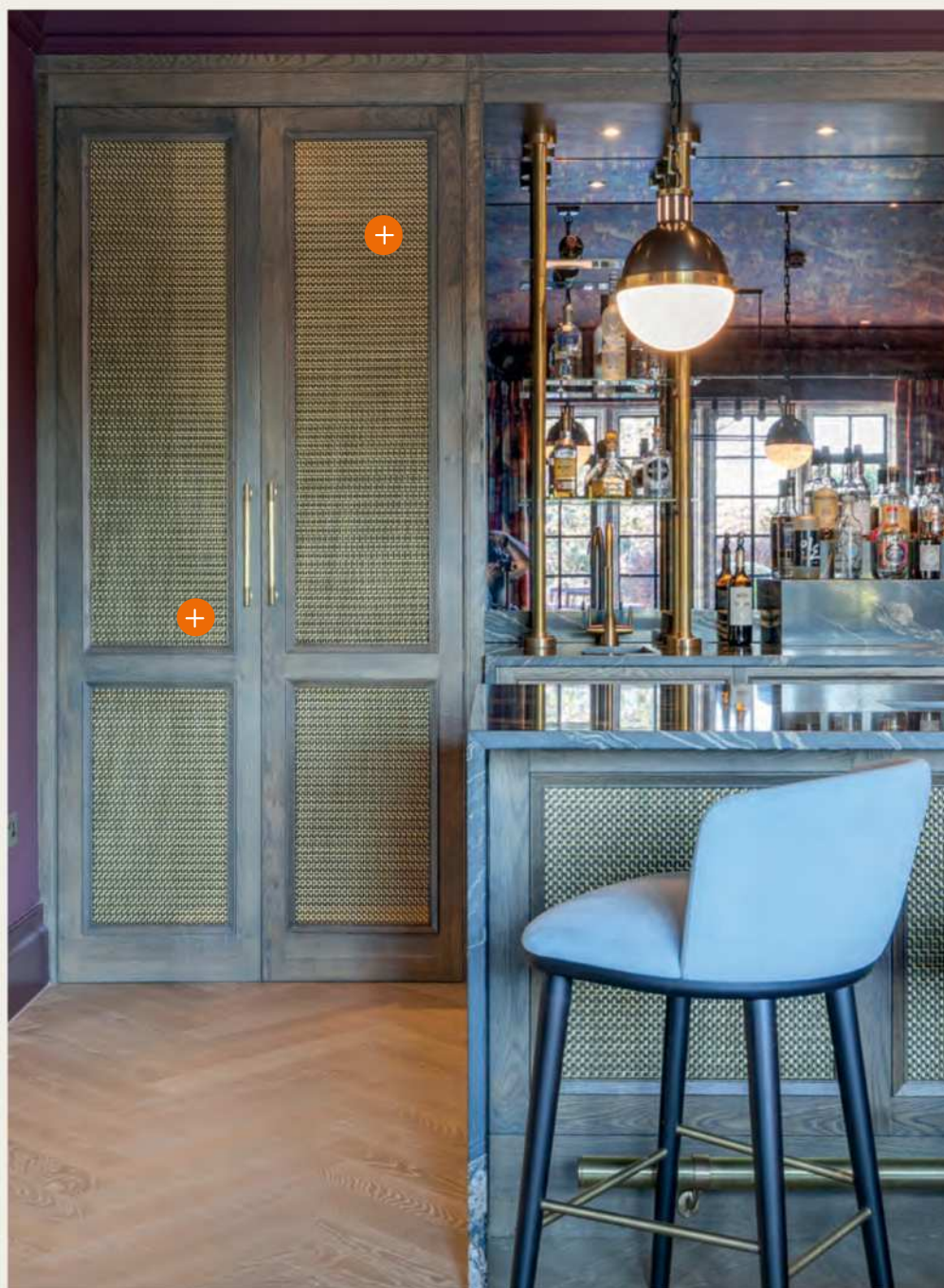


Ordering your grille

Please turn to **page 122** for details on how to order your grille.

Double Rectangular Interwoven *grilles*

A basket weave style, our hand-woven Double Rectangular Interwoven grille is available in two orientations and is supplied in a rectangular layout with either reeded or plain style sections.

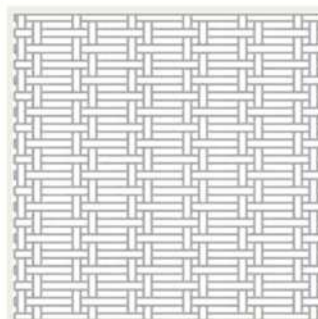


Orientation options

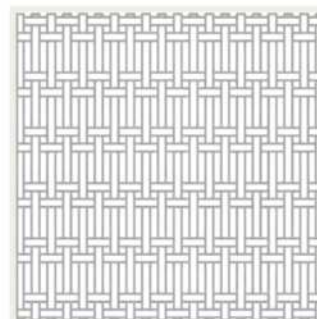
Available in a horizontal or vertical style.

Dimensions

13x3mm (½" x ⅜")



Horizontal



Vertical

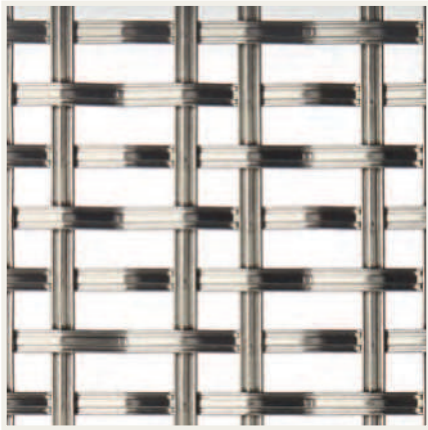
In-situ grille photographed in our satin brass unlacquered (SBUL) finish.

Plain or reeded wire

Double interwoven grilles are available in both plain and reeded wires with a 3mm wire width.



Plain wire



Reeded wire

Mesh options

Available with a number of mesh options, for more information, please see **page 121**.

Grille frame

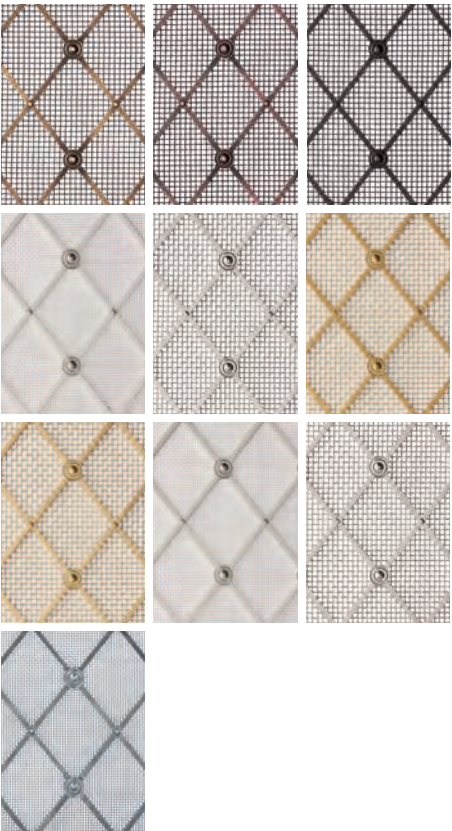
Available with a metal frame, for more information, please see **page 120**.

Grille tolerance

All grilles are made to a 3.175mm (1/8”) tolerance.

Finish options

To see our 10 grille finishes in full, please turn to **page 100**.



Ordering your grille

Please turn to **page 122** for details on how to order your grille.

Perforated *sheet grilles*

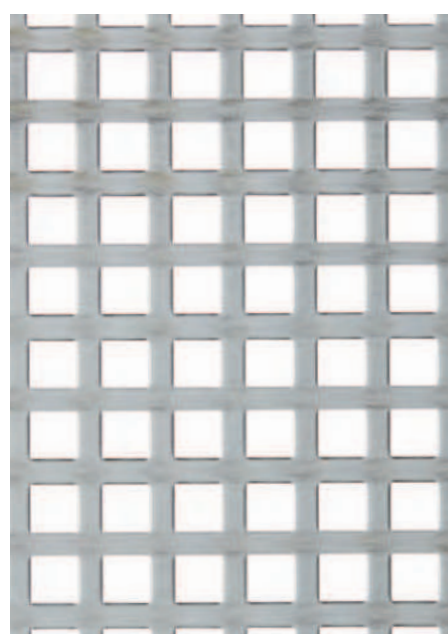
Our decorative perforated sheet grilles are used in kitchens as radiator covers or on interior doors.



Large cross
23mm point to point



Interlocking circle
34.9mm circle diameter



Square
6.3mm internal square

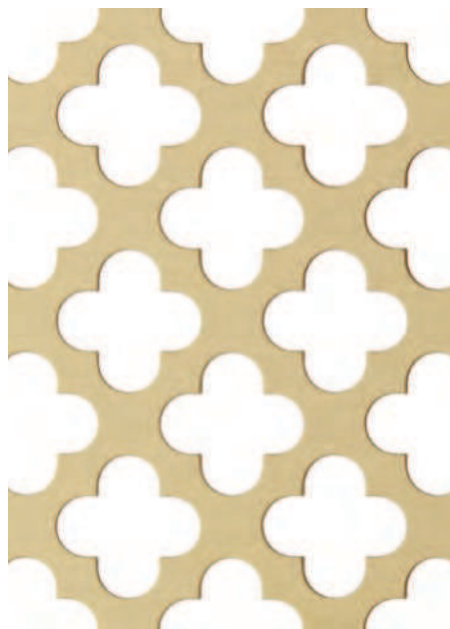
In-situ grille photographed in our satin brass lacquered (SBL) finish.



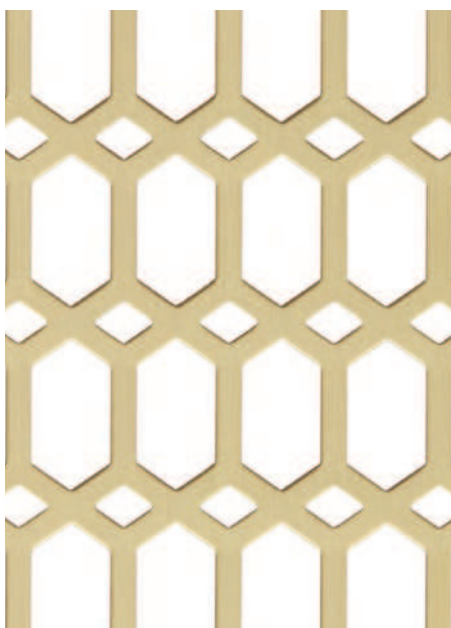
Small club
6mm max width



Small cross
15mm point to point



Large club
19mm max width



Hexagonal
Internal lozenge 19mm (h) x 9.5mm (w)



Diamond
9.5mm internal square

Specifications

- Available in standard full sheets, 2000mm x 1000mm
- Each perforated sheet measures at 2000mm x 1000mm. As the sheets have a small border, the patterned area of the sheet measures at 1970mm x 970mm
- Sheet thickness is 0.8mm
- Also available in aluminium, self-colour only
- Made cut to size

Mesh options

Available with a number of mesh options, for more information, please see [page 121](#).

Grille frame

Available with a metal frame, for more information, please see [page 120](#).

Grille tolerance

All grilles are made to a 3.175mm ($\frac{1}{8}$ ") tolerance.

Finish options

To see our 10 grille finishes in full, please turn to [page 100](#).

Ordering your grille

Please turn to [page 122](#) for details on how to order your grille.

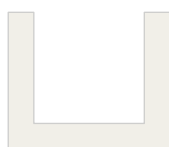
Grille *frames*

All of the grilles featured in our product guide can be supplied with an added metal frame.

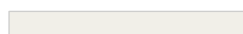
We offer four frame options: Angle, Channel, Flat and T-section, as pictured below.



Angle Section



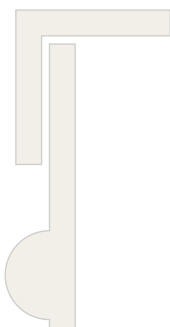
Channel Section



Flat Section



T-section



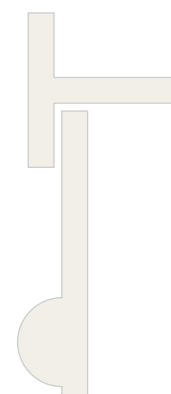
Angle Section
attached to grille (side view)



Channel Section
attached to grille (side view)



Flat Section
attached to grille (side view)



T-section
attached to grille (side view)

Additional information

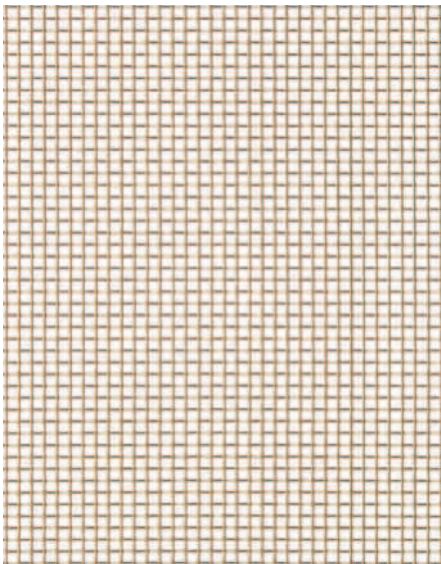
- All frames can be supplied in either a 12.7mm, 19.1mm or 25.4mm face width
- Frames are made from solid brass 3.2mm thick section and can be finished to match the grille required
- Screw holes can be added to the face of the frame for fixing if required

Mesh

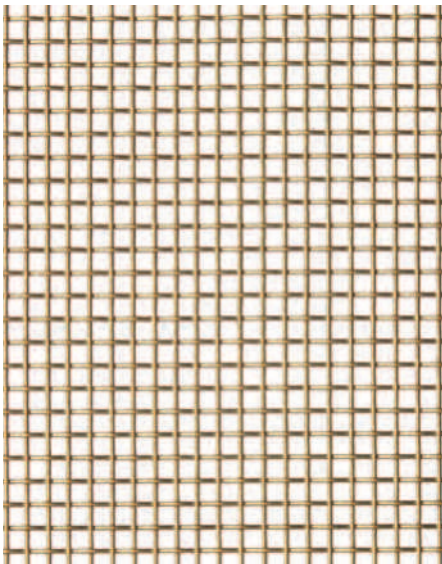
Our brass mesh is used with many of our grilles as a backing, however, it can also be applied alone when something simpler is required.

Additional information

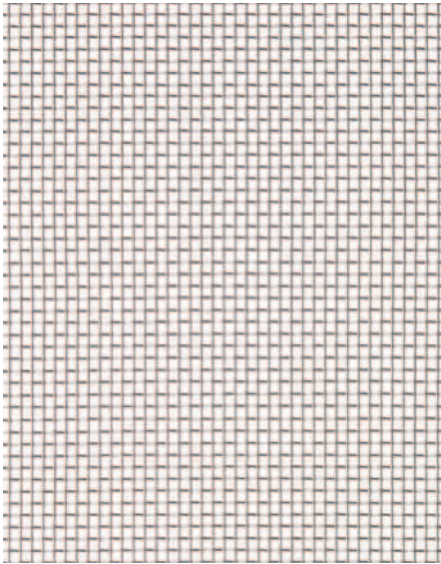
- All available cut to size and also on a roll 1200mm high (approx. 4ft)
- All available in brass and stainless steel
- Finishes available on brass material only



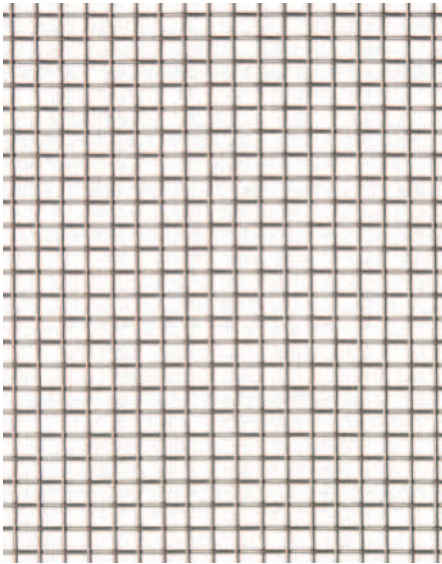
Fine mesh brass
Square holes 1mm internal
mesh 0.65mm thick



Coarse mesh brass
Square holes 3mm internal
mesh is 1.3mm thick



Fine mesh stainless steel
Square holes 1mm internal
mesh is 0.65mm thick



Coarse mesh stainless steel
Square holes 3mm internal
mesh is 1.3mm thick

Finish options

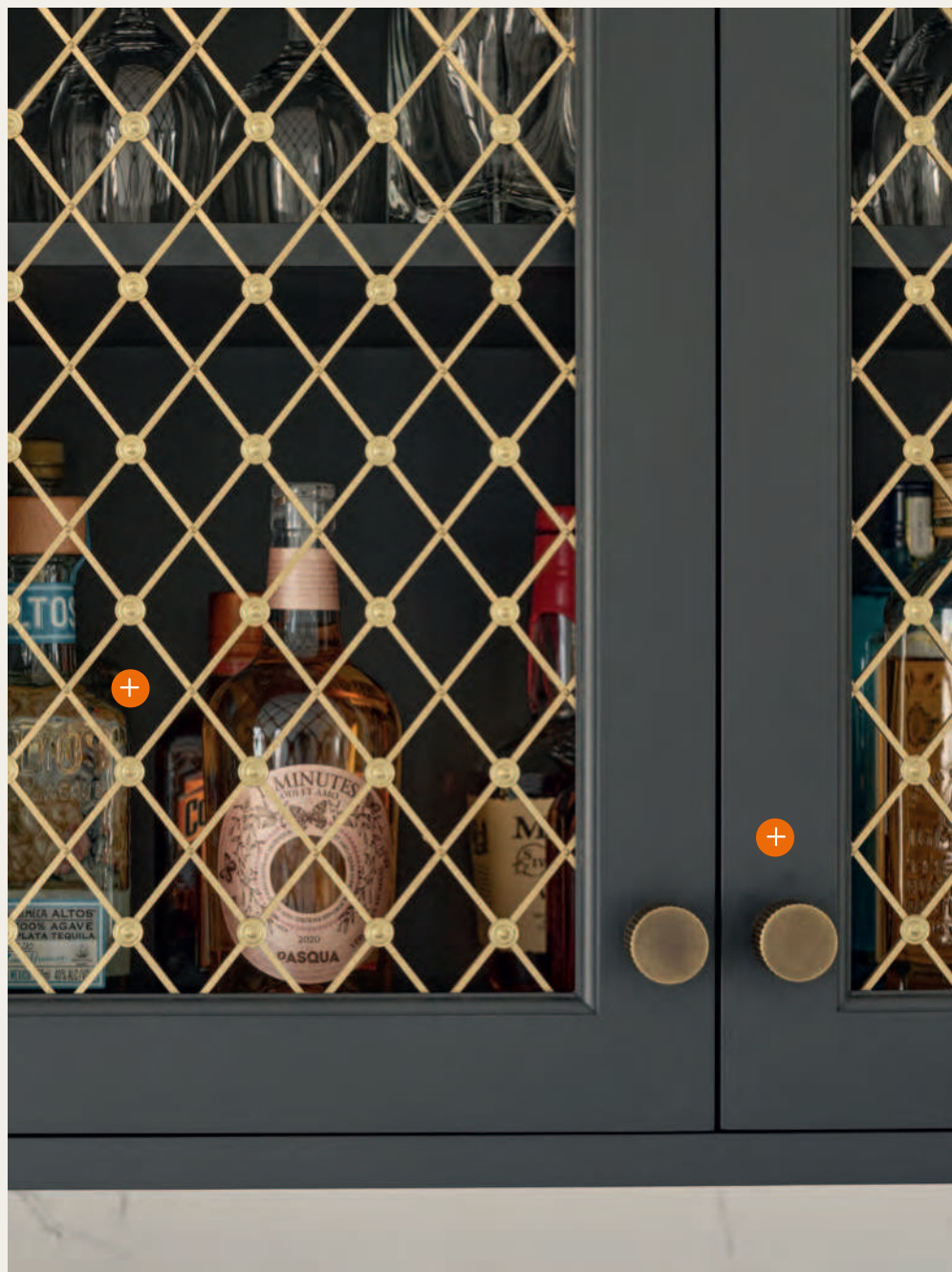
To see our 10 grille finishes in full, please turn to **page 100**.

Ordering your grille

Please turn to **page 122** for details on how to order your grille.

Ordering *your grille*

To place an order for a decorative grille, please email sales@armacmartin.co.uk with your enquiry. Please use the guide below to provide our team with as much information as possible.



Required for all grilles

- Supply and identify the height and width of your panel. This should be the actual size you require, including the rebate of your door. Please allow 1.6mm all around to allow the grille to fit in your rebate comfortably
- Note the finish required
- Note if you require a metal frame

Additional details

Regency Diamond and Georgian Square

- Advise if backing mesh is required and specify fine or coarse (**see page 121**)
- Advise if rosettes are required and if on every intersection or on alternate intersections

Elliptical grilles

- Note which way you require the ellipses to run - horizontally or vertically (**as pictured on page 104**)
- Advise if backing mesh is required and specify fine or coarse (**see page 121**)
- Advise if rosettes are required and if so which style

Interwoven grilles

- Note if you require a diamond, square or rectangular pattern
- Note the aperture size required
- Note if you'd like plain or reeded wires and the size required
- Advise if backing mesh is required and specify fine or coarse (**see page 121**)

Grille frames

- Note the type and size of frame required
- Supply the aperture (hole size) or overall size (including frame)
- Advise if screw holes are required in the frame for fixing

In-situ grille photographed in our polished brass unlacquered (PBUL) finish.



In-situ grille photographed in our antique brass lacquered (ABL) finish.

Acknowledgements

Thank you

Design by Sophie Paterson Interiors. Photography by Ray Main.	2
Quinton - Design by Sola Kitchens. Photography by Chris Snook.	20
Jaspette - Design by Thorpe Concepts. Photography by Interiors by Young Glass.	21
Bromsgrove - Design by JK Interior Living. Photography by Linda Pordon.	23
Arbar - Design by Brownlow Furniture. Photography by Mark Reeves.	24
Longbridge - Design by RK Designs.	26
Edgbaston - Design by Andrea Benedettini. Photography by Julian Abrams.	27
Crossways - Design by Sophie Paterson Interiors. Photography by Ray Main.	28
Aberdovey - Design by Victoria Summer. Photography by Handover.	30
Bournville - Design by Atelier.	31
Cotswold - Design by Claire Totman. Photography by Sarah Griggs.	32
Design by Ashley Montgomery. Photography by Lauren Miller.	34
Bakes - Design by Peden & Pringle. Photography by Paul Craig.	36
Bakes - Design by Kate Feather Design. Photography by Birgit Mons.	37
Queslett - Design by Himlekök and Refine Design Studio. Photography by Osman Tahir.	38
Withenshaw - Design by Laura Butler-Madden. Photography by Patrick Butler-Madden.	40
Washwood - Design by Laura Butler-Madden. Photography by Patrick Butler-Madden.	41
Bromford - Design by Woodale Designs.	44
Kingsheath - Design by Cherished Bliss.	45
Sparkbrook - Design by Abington Design House. Photography by Jamie Hackett Photography.	46
Leebank - Design by Blakes London.	48
Carlton - Design by Andrea Benedettini. Photography by Ray Main.	49
Lincoln - Design by Krantz Designs. Photography by Paul Craig.	50
Rotunda - Design by La Maison.	51
Jefferson - Design by Sophie Paterson Interiors. Photography by Ray Main.	52
Gaumont - Design by Sophie Paterson Interiors. Photography by Ray Main.	53
Sutton - Photography by Gregory Croxford Living.	54
Belgrave - Design by The Cabinet Gallery Utah.	55
Snowdrift - Design by Sophie Paterson Interiors. Photography by Ray Main.	56
Merrick - Design by Rosewood Luxury Developments. Photography by Handover.	57
Latchford - Design by JK Interior Living. Photography by Linda Pordon.	58
Design by Amanda Teal and Segale Bros Wood Products. Photography by R. Brad Knipstein.	59

Digbeth Ridged - Design by Kate Marker Interiors. Photography by Stoffer Photography Interiors.	70
Digbeth Plain - Design by McCroskey Interiors. Photography by Kevin Miyazake.	72
MIX Diamond - Design by Money Hill Interiors.	74
MIX Straight - Design by Jean Stoffer. Photographed by John Stoffer.	76
MIX Plain - Design by Thorpe Concepts. Photography by Interiors by Young Glass.	78
Bromwich - Design by Michael Farrell. Photography by Infinity Media.	80
Victoria Plain - Design by Summer House Interiors.	85
Oblique - Design by McCroskey Interiors.	88
Quadrille - Design by Bespoke of Winchester.	89
Dougan - Design by Noel Dempsey Design.	90
Dougan - Design by Bondi Kitchens. Photography by Jacqui Turk.	91
Grove - Design by Sophie Paterson Interiors. Photography by Ray Main.	92
Harold - Design by Atelier Cabinet Makers.	94
Grille finishes - Design by Naked Kitchens.	100
Regency Diamond Grille - Design by McCroskey Interiors. Photography by Nate Sheet.	102
Georgian Square Grille - Design by Barr Joinery. Photography by Lucy Butler-Walters.	106
Diamond Interwoven Grille - Design by Sophie Paterson Interiors. Photography by Ray Main.	108
Square Interwoven Grille - Design by Becky Shea Design & Bakes & Kropp.	110
Double Diamond Interwoven Grille - Design by Louise Bramhill. Photography by Susie Lowe.	114
Double Rectangular Interwoven Grille - Design by St Giles Furniture. Photography by Chris Wharton.	116
Perforated Sheet Grille - Design by Peden & Pringle. Photography by Paul Craig.	118
Ordering your grille - Design by Kitchen Cove Design Studio. Photography by Erin Little.	122
Ordering your grille - Design by Krantz Design. Photography by Paul Craig.	123
Claremont - Sophie Paterson Interiors. Photography by Ray Main.	126
Cotswold Pot Rail - Design by Atelier Cabinet Makers.	128
Towel Rail - Photography by Handover.	130
Brindley Hanging Wine Glass Rack - Design by Naked Kitchens.	131
Shelf Brackets - Design by Laura Butler-Madden. Photography by Patrick Butler-Madden.	132
Wall Hooks - Photography by Handover.	134
Design by AKB Design. Photography by Maxime Desbiens.	142
Design by McCroskey Interiors. Photography by Nate Sheet.	146



Our MIX and Latchford collections photographed in our aged brass (BEL) finish.

